

PMWeb 7

Everything, everywhere.

Better than apps

Project management apps are great. Except the part about installing them on every device you use in the course of a day. Or downloading and managing updates. Or, especially, when you realize that apps contain only a subset of the features you need to actually do your job. Of course, for years that has been one of the costs of working with construction apps: *gain the portability of an app but lose the power of the desktop applications you need.* PMWeb 7 eliminates that tradeoff.

For over a decade, the world's most demanding construction professionals have relied on PMWeb to provide unrivaled power, flexibility, and ease of use, in a single, integrated, online platform. To that feature list, we now add this:

Complete portability. On every device.

PMWeb 7 is optimized to load and run faster on devices large and small, even when managing the huge volume of data that modern projects generate. That applies to every feature in every PMWeb module, not a watered-down subset of field tools. And our new responsive design engine automatically adjusts the entire application to fit the screen you're viewing. Best of all, every feature of PMWeb is available without installing, maintaining, or worrying about, a single app. All you need is a browser and a password to immediately get to work with PMWeb 7. Now you can take all of the best project management platform with you, wherever you go.

The screenshot displays the PMWeb 7 interface for a project named 'ACME - ACME HOSPITAL PROJECT'. The interface is divided into several sections:

- Left Sidebar:** A navigation menu with icons and labels for PLANS, FORMS, COSTS, SCHEDULES, ASSETS, WORKFLOWS, PORTFOLIO, TOOLS, HOME (highlighted), SEARCH, RECENT, UNIVERSITY, and EXIT.
- Top Navigation:** A horizontal bar with tabs for CONTROLS, PROJECT CENTER (active), PORTFOLIO, CLIENT FORM, DOCUMENTS, 3D VIEWER, MAP, EVENTS (7), and SETTINGS.
- Project Information:** A form with fields for Program (3 - Commercial), Project ID* (ACME), Name* (ACME HOSPITAL PROJECT), Location (ACMH - ACME HOSPITAL CAMPUS), Project Status (Design), Project Type (New Construction), Category (Vertical), Status / Revision (Approved), Currency (Dollar (USA)), Target Budget (\$10,000,000.00), Target Revenue (\$12,080,000.00), Target Duration (365 day), Target Start/Finish (Jan-01-2014 to Apr-15-2014), Actual Start/Finish (Jan-01-2014), and Percent Complete (63.50%).
- IMAGES:** A section showing a 3D architectural rendering of the hospital campus.
- BUDGET:** A progress bar showing 108% completion.
- SCHEDULE:** A progress bar showing 65% completion.
- DOCUMENTS:** A progress bar showing 31% completion.
- PERSONNEL:** A table with columns for SPEC, UOM, and DATA. It lists various roles and the names of the personnel assigned to them.

SPEC	UOM	DATA
Development Lead		Carol Davis
Development Manager		Stephen Gorse
Construction Lead		Melanie Tynan
Project Manager		Keran Parr
DRP Resource 1		Shane Maxx
DRP Resource 2		Bill Travis
Architect of Record		Clete Troyer
Design Architect		Rockwell Architects
Interior Designer		Gorvin Partners
Landscape Architect		Redux
Precon Manager		Plutonics, Ltd.
Structural Engineer		ACME Engineering
MEP Engineer		ACME Engineering
Civil Engineer		ACME Engineering
Accessibility Consultant		Questarr
Enclosure Consultant		Questarr
Fire Life Safety		Consolidated Labs
Elevator Consultant		Otis Elevators

Industry Best Features, All New Interface

Responsive design

This is big. (And small.) PMWeb 7 automatically detects the device you are using and the orientation of the screen and adapts itself to make best use of the available space. Project management's best feature set, all of your project data, instantly tailored to the device you're holding. Introducing PMWeb 7, powered by our proprietary responsive design engine.



Screens Automatically Adapt to Devices

All new interface

Every page of every record type has been recoded, refreshed, and refined, in PMWeb 7.

Responsive layouts Screens automatically adapt to make best use of device space

Vertical line editing On narrow devices, tables are edited in easy to use vertical mode

Main tab The Main tab automatically separates to Header and Details for faster loading

Faster performance Pages have been recoded to load faster across the platform

Colors Now you can create your own interface color scheme

Login page Add a personalized image to the login page to welcome users

Page layouts Page layouts have been standardized to make everything more intuitive

Control updates Every control in every page has been updated

Toolbar layouts Standardized toolbar layouts and a new icon set on every page

Control panel The menu has been replaced by a responsive, collapsible, control panel

Overlay menus Menus open in easy to read, space saving, overlay mode

Reorganized menus Menu choices have been logically regrouped and sorted

Breadcrumbs bar Enhanced to include more information on every page

Help icon Always at your fingertips in the new breadcrumbs bar

Online help Online help has been completely updated and new topics added

Home button A control panel button makes getting home easy from anywhere

Search button A control panel button puts platform wide search front and center

Recent button (control panel) The last ten records you used, click any to reopen

Recent button (records) The last ten records of that type you used, click any to reopen

My settings Redesigned to make personalizing PMWeb faster and easier

Home page controls tab Add a background image to make your PMWeb unique

Home page project center tab 100% redesigned, 100% better

Home page map view tab Full screen interactive map with spreadsheet overlay

Drag and drop Drag and drop metaphor supported on every device and platform

Responsive dialogs Dialogs adapt to device form factors without sacrificing function

Document manager Simplified and streamlined for better management of digital content

Image gallery Image gallery redesigned and available everywhere

Copy project dialog Completely rebuilt for clarity

Post/unpost buttons Post buttons replaced with on/off switches

Linked assets, records, transmittals Tables replaced by lightweight, faster loading, fields

Layouts dialog streamlined Now even easier to create custom grid layouts

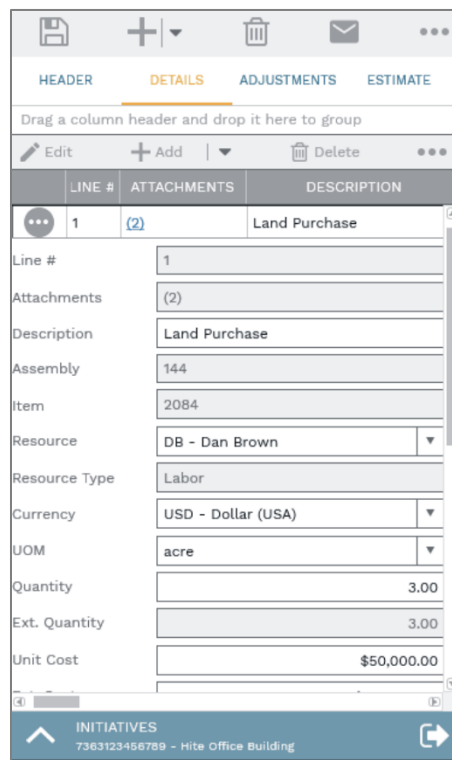
Security The define groups tab redesigned with an easier to use layout

PMWeb admin The admin module has been reorganized and updated

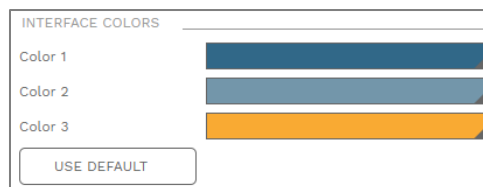
Some of the details

Responsive layouts With all-new responsive layouts you can take PMWeb wherever projects lead you. Screens automatically reorganize to make best use of the space available. We invite you to visit www.pmweb.com/pmweb7 to see responsive design in action.

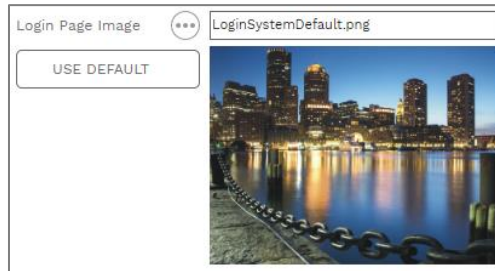
Vertical line editing On narrow devices, such as phones in portrait mode, when you open a table line for editing, the fields in the line automatically reorganize themselves vertically. No more scrolling left and right to find the fields and toolbar controls you need.



Colors Create a custom color scheme for your PMWeb. In the redesigned PMWeb Admin utility, click on the Interface tab and use the color selectors to express your artistic vision.



Login page While you're in the PMWeb Admin, visit the Login tab. Click the helper button to upload a custom image to greet your PMWeb users.

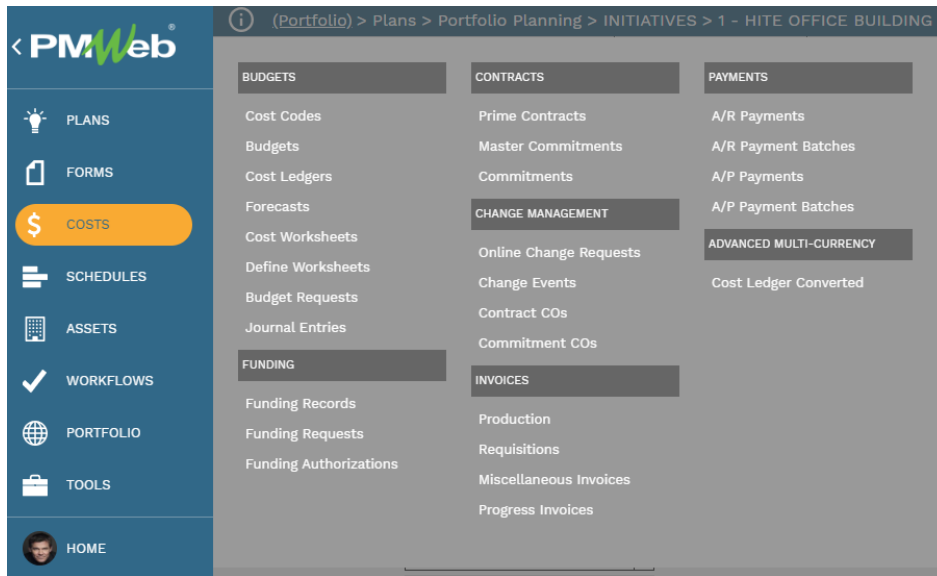


Page layouts and control updates Every page in PMWeb has been updated, organized, and standardized to make it easier for you to focus on your work, not on the interface. (But the interface is way better too. Every single control has been upgraded.)

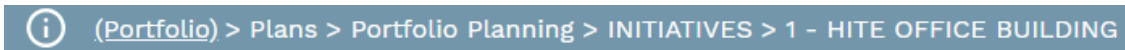
Toolbar layouts Buttons on toolbars have a standard logical order, making it fast and easy to get things done.



Control panel with overlay menus Click a button in the collapsible control panel to see the easy-to-read menu in space saving overlay mode.



Breadcrumbs bar Breadcrumbs deliver more information on every page and now include the Online Help button.



Home and search buttons These buttons have a new home on the control panel, making them always available.

Recent records buttons From the control panel or within a record, click this button to see the last 10 records you used, and quickly reopen any one of them.

Recent Records	
PROJECT	RECORD #
ACMH - ACME HOSPITAL CAMPUS	1
<small>Viewed Jun-25-2020 7:44:48 AM</small>	
ACME - ACME HOSPITAL PROJECT	1
<small>Viewed Jun-24-2020 2:19:56 PM</small>	
U-200 - University Project	33
<small>Viewed Jun-24-2020 2:18:54 PM</small>	
ACME - ACME HOSPITAL PROJECT	284
<small>Viewed Jun-24-2020 2:16:43 PM</small>	
ACME - ACME HOSPITAL PROJECT	235
<small>Viewed Jun-24-2020 1:37:28 PM</small>	

My settings The My Settings page has been completely reorganized and redesigned.

📁
🕒

USER SETTINGS
PROFILE
OPTIONS

HOME PAGE SETTINGS

DELEGATES

Last Login: **Aug-12-2020 8:53:38 AM**

First Name*:

Last Name:

Email*:

Cell:

Image: ⋮ ✕

Old Password:

New Password:

Confirm Password:

When I Log Out of PMWeb, if I Chose "Remember Me" at Login:

Save My Authentication Cookie

Delete My Authentication Cookie

Prompt Me

English

Prompt to Save When Navigating Away From Records

Open With Menu Collapsed

Advanced Grid Filters

EVENTS

TRIGGER	SUMMARIES ONLY
Alerts	<input type="checkbox"/>
Reminders	<input type="checkbox"/>
Subscriptions	<input type="checkbox"/>
Workflow	<input type="checkbox"/>

Summarize Every

Home page Every home page tab has been updated.

< PMWeb
CONTROLS
PROJECT CENTER
PORTFOLIO
DASHBOARD
CLIENT FORM
QUERY
MAP
SETTINGS

- PLANS
- FORMS
- COSTS
- SCHEDULES
- ASSETS
- WORKFLOWS
- PORTFOLIO
- TOOLS
- HOME
- SEARCH
- RECENT
- UNIVERSITY
- EXIT

RSS FEED

[How These Students Lost and Regained the Magic of Senior Year](#)

LINKS

- PMWeb
- Google
- CNN

WEATHER

Los Angeles, CA, USA

F	S	S	M	T
55 F	54 F	79 F	75 F	70 F
56 F	67 F	66 F	65 F	64 F

WORKFLOW INBOX

Record Estimates - 4725 Project/Location U-200 - University Project Due Dec-09-2017 Progress Step 3 of 3

Description 2nd Estimate

Instructions

Record Initiatives - 1 Project/Location U-200 - University Project Due Apr-13-2015 Progress Step 4 of 4

Description HITE OFFICE BUILDING

Instructions

Record Initiatives - 7361 Project/Location ACME - ACME HOSPITAL PROJECT Due Nov-27-2014 Progress Step 4 of 4

Description Hospital Initiative

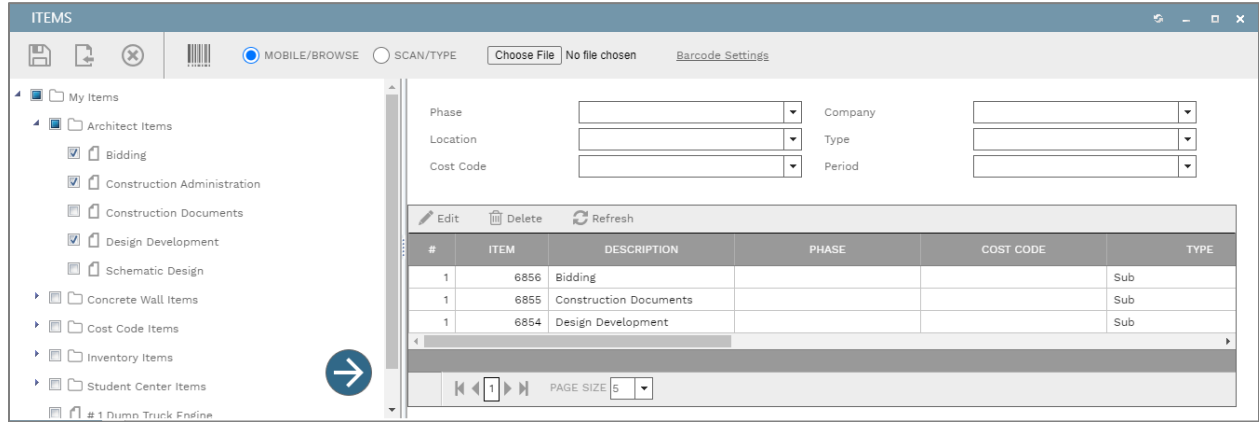
Instructions

PAGE SIZE 5

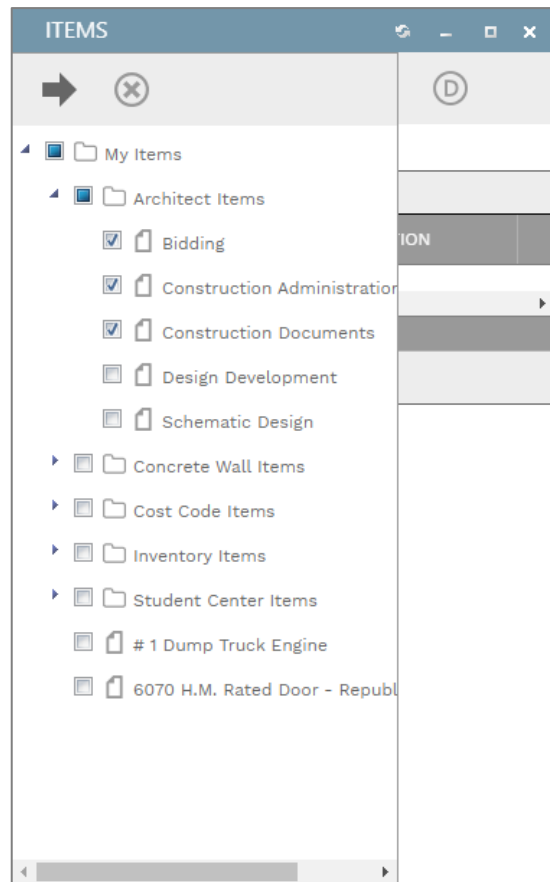
Copyright 2020 PMWeb, Inc. 1 Pope Street, Wakefield, MA 01880 | +1.617.207.7080 | sales@pmweb.com

7

Drag and drop Even on devices or browsers that don't support drag and drop, the metaphor persists. Click to select one or more items and then click the floating arrow button to "drop" them on the table.



Responsive dialogs On very small devices, complex dialogs automatically adapt themselves with overlay tabs when needed, to keep your work moving forward.



Document manager The document manager page has been redesigned and reorganized.

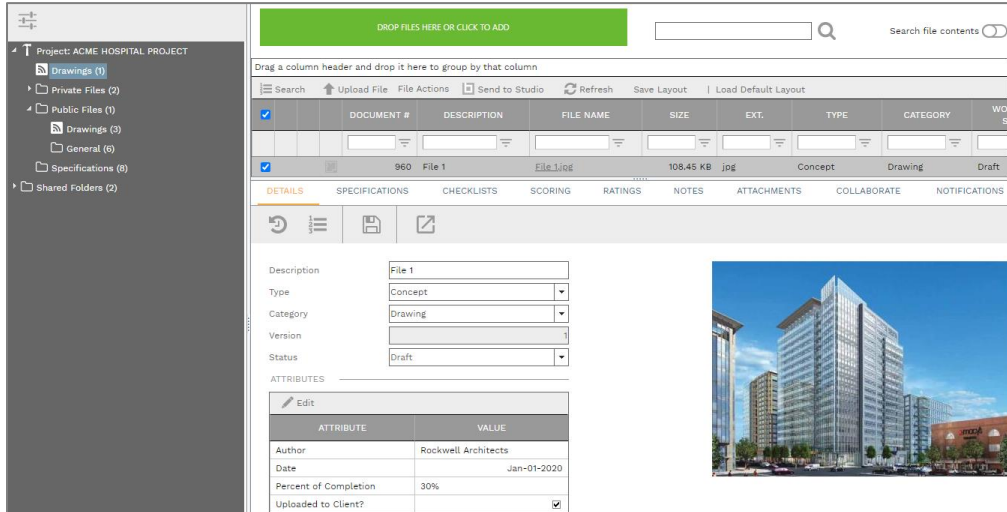
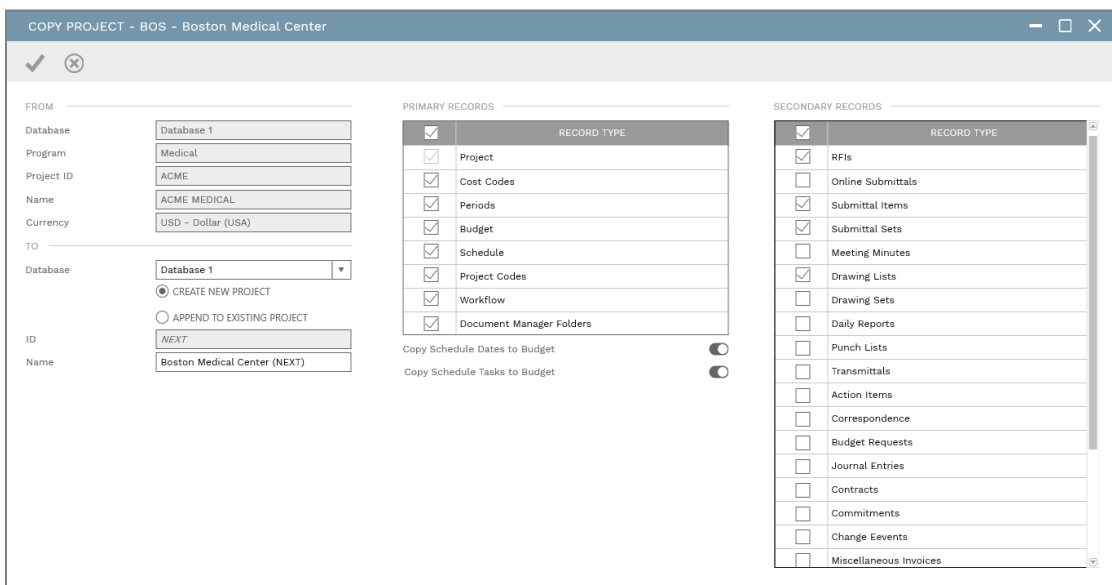


Image gallery The image gallery control has been updated and deployed in every record with the attachments feature.



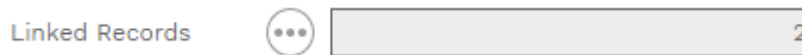
Copy project dialog The copy project dialog has been completely reorganized for clarity.



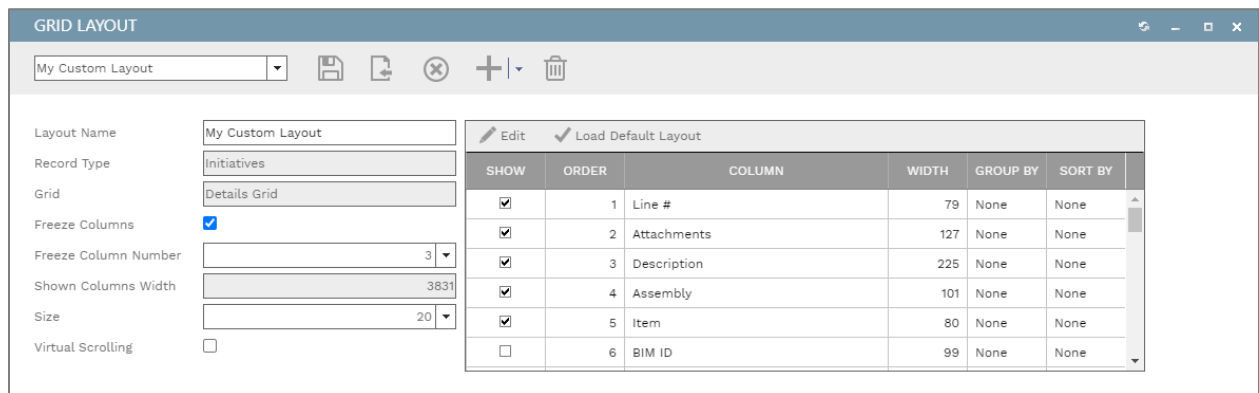
Post/un-post buttons Post and un-post buttons have been replaced with on and off switches.



Linked assets, records, transmittals Bulky tables have been replaced by lightweight, faster loading fields with helper buttons that show the details.



Layouts dialog It's now even easier to create custom layouts with the reorganized dialog.



Security The groups tab has been restructured for ease of use.

